

# Wet Drum Magnetic Separator

*...Only from Eriez.*

## Laboratory Model L-8

*For laboratory investigation of ore concentration and beneficiation, heavy media recovery, and purification of liquids and slurries containing ferrous contaminants. For small pilot plants. For low-capacity wet separation applications.*

Eriez' Laboratory Model Electro Wet Drum Magnetic Separator is designed for use in laboratories, small pilot plants and low-capacity wet separation applications.

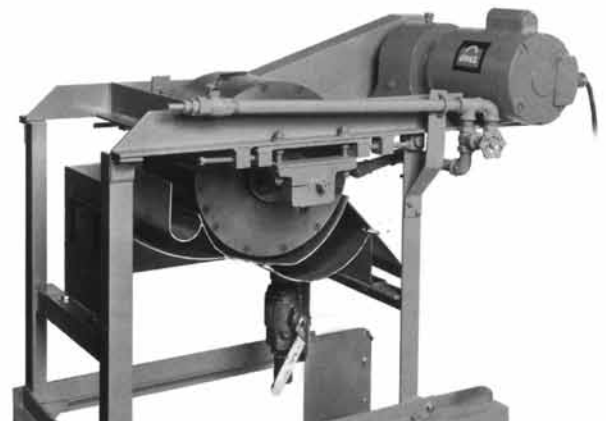
The basic unit consists of a stationary electro-magnet mounted on a shaft with an outer stainless steel shell completely enclosing the magnetic element. The drum heads and shell assembly rotate on bearings around the fixed shaft and magnet.

The entire drum assembly is supported in a stainless steel tank with a water level and discharge control. One side of this tank is transparent so the separation action and water level can be observed.

The laboratory Model Wet Drum Separator has a capacity of up to eight gpm and can be used in either concurrent or counter-rotation operation. It is capable of simulating cobbing, roughing and the finishing stages of magnetic ore beneficiation.

Because an electromagnetic element is used, field intensity can be regulated to determine optimum separation conditions.

In addition, the magnetic attractive force can be regulated to simulate cobbing, roughing and finishing applications by adjusting the D-C voltage input and gap between the drum and tank.



## CONCURRENT

Concurrent operation is most effective for producing an extremely clean magnetic concentrate and is widely used in both heavy media and ore concentration systems.

The magnetic element should be positioned approximately as shown in Fig. 1.

## COUNTER-ROTATION

Counter-rotation operation is desirable when magnetic losses are to be minimized and a less-clean concentrate is satisfactory.

When using the separator for counter-rotating operation the magnet element must be positioned approximately as shown in Fig. 2. The rotation of the motor is also reversed for counter-rotation operation.

## SPECIFICATIONS

Control - Eriez Model LWD Control incorporating a variable D-C power supply with ammeter, voltmeter and drum motor starter-reversing switch.

Control Ratings - Input - 115V AC, 50/60 Hz, 1Ph, 10 Amps.

Output - 0 - 115V DC, 400 watts

Wheeled stand shown on Page 1 is available as an option.

Drum Size - 12" (305mm) diameter x 7-1/2" (190mm) wide (6" [152mm] magnet width)

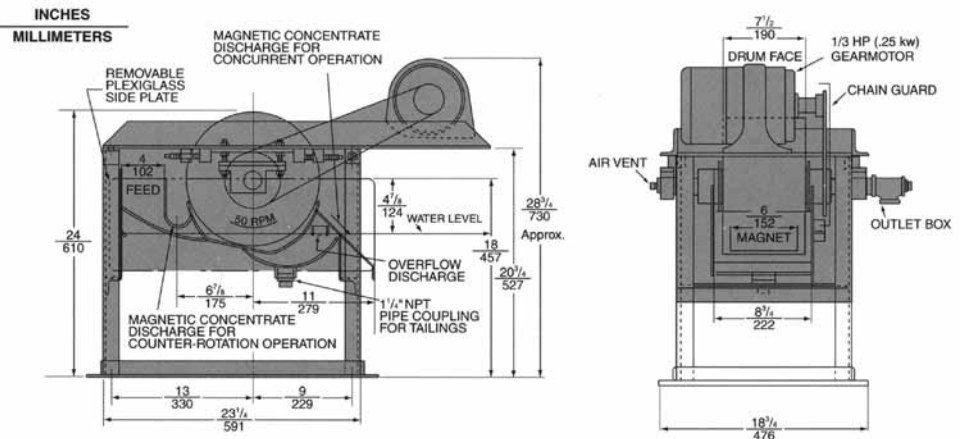
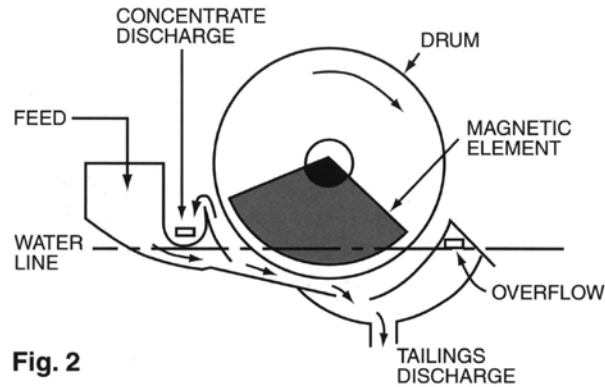
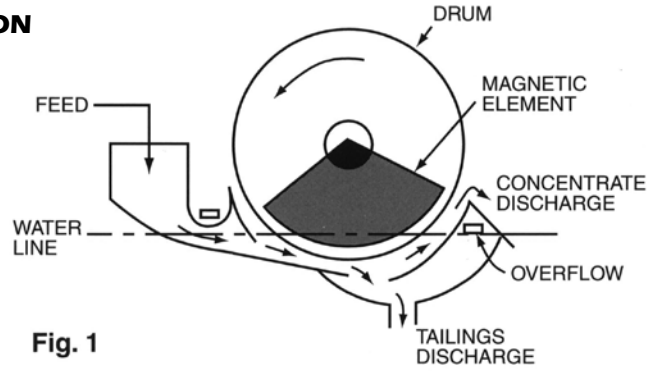
Tank - Universal, stainless steel with one Plexiglas side for observation

Motor - 1/3 HP (.25kw) TEFC 115V 60Hz, 1 Ph AC

Wattage (approx.) - 370@ 115V DC

Shipping weight (approx.) - 400 lb. (180kg)

## OPERATION



Dimensions and specifications are subject to change without notice.



World Authority in Advanced Technology for Magnetic, Vibratory and Inspection Applications

Headquarters: 2200 Asbury Road, Erie, PA 16506-1440 U.S.A.

Telephone: 814/835-6000 • 800/345-4946 • Fax: 814/838-4960 • International Fax: 814/833-3348

Web Site: <http://www.eriez.com> e-mail: [eriez@eriez.com](mailto:eriez@eriez.com)

Manufacturing Facilities: AUSTRALIA • BRAZIL • CANADA • CHINA • INDIA • JAPAN • MEXICO • SOUTH AFRICA • UNITED KINGDOM • UNITED STATES